



Six distinguished homes. Two centuries of history. One unforgettable weekend.

HISTORIC SELMA-DALLAS COUNTY  
*Tour of Homes*

For five decades, the Historic Selma–Dallas County Tour of Homes has opened doors to the stories, craftsmanship, and architectural legacy of our region. The 50<sup>th</sup> Anniversary Tour, held March 20–21, 2026, is a Golden Anniversary celebration offering a rare glimpse into nearly two centuries of Black Belt history.

The privately-owned historic residences open from 10AM–4PM on Saturday. They represent a range of architectural styles from the early 19th century through the antebellum period. Each home has been carefully preserved and tells a unique story of life, land, and legacy in Dallas County.

The **Bland–Chestnut–Turner House** is a classic Plantation “I” House featuring refined Greek Revival details, original interior elements, and an on-site family cemetery currently undergoing restoration.

The **Ellis–Dunaway–Gardner House** began its life as a boys’ academy before becoming a private residence, and has been thoughtfully restored to highlight its original architectural character and educational roots.

The **Mill–Albritton House**, documented by the Historic American Buildings Survey, is an elegant antebellum home distinguished by its octagonal columns, heart pine floors, double staircases, and multiple fireplaces.

The **Molett House** is one of the oldest surviving homes in Dallas County and has remained in the same family for over two centuries, carefully preserved and relocated to protect it from demolition and flooding.

The **Pope–Givhan House** is a Tidewater Cottage reflecting the traditional lifestyle of the planter class, recently relocated and restored, with expansive porches, restored fireplaces, and sweeping Black Belt views.

**Tasso** is a Federal-style home celebrated for its rare French panoramic scenic wallpaper and extensive preservation efforts that honor both its artistry and architectural integrity.

The **Cochran House at Crumptonia**, is a Greek Revival style home that boasts a wide central hall, which once served as a dance floor for family and friends. The front porch is supported by square pillars made of long, straight planks, with a proportioned entablature.

In addition to the private homes, tour guests are invited to explore two of Selma’s most treasured historic landmarks. **Sturdivant Hall Museum** (F:10-4, S:10-2) showcases the grandeur of Greek Revival architecture with its iconic columns, imported Italian marble, and timeless elegance, while the **Vaughan–Smitherman Museum** (F:10-4, S:10-12) stands as a cornerstone of Selma history built as a school for orphans and children of Masons, it has served as a Confederate hospital, the Dallas County Courthouse, a military school, and the Vaughan Memorial Hospital through the years.



**Bland–Chestnut–Turner**  
(c. 1842)



**Ellis–Dunaway–Gardner**  
(c. 1850)



**Mill–Albritton**  
(c. 1854)



**Molett House**  
(c. 1819)



**Tasso**  
(c. 1830s)



**Pope–Givhan**  
(c. 1838)



**Cochran/Crumptonia House**  
(c. 1855)



**Sturdivant Hall**  
(c. 1856)



The weekend includes a festive Friday evening Gala beginning at 6PM at the **Vaughan-Smitherman Museum**, featuring refreshments, live music by **Sarah Blackmon**, a silent auction, and a keynote address by **Major General Walter D. Givhan, USAF (Ret.)**, a Selma native with a distinguished military and civic career.

SDCHPS is partnering with **Old Cahawba Archaeological Park** to offer guided wagon tours, beginning on the hour, of the one-room schoolhouse, St. Luke's Episcopal Church, and the Kirkpatrick property from 10 AM-4 PM both Friday and Saturday.

Art lovers will enjoy a special exhibit at the **Selma Art Guild** featuring baskets by **April McCartney** and artwork by local artists from 10 AM-4 PM both days.

The **Golden Anniversary Tour of Homes** is a celebration of preservation, community, and history!

Package Tickets are \$50 for adults and \$25 for children. They are available at **Eventbrite.com** and may also be purchased **in person** on **March 20-21** at the **Vaughan-Smitherman Museum** (F:9-4 & 6-7) & (S:10-12) as well as at the **Orrville Library** (S:9-12).

For updates, lodging, dining and tourism info, please follow **HistoricSelma** on **Facebook** and **Instagram** or call 334-412-8550 or 800-457-3562.

**Sponsored by:**



www.Alabama.Travel



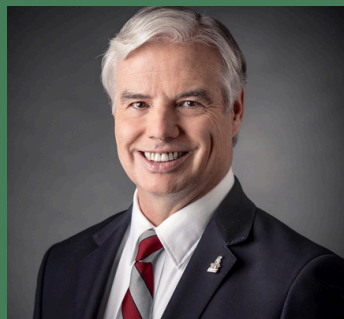
Selma-Dallas County Historic Preservation Society  
HistoricSelma.org  
334-412-8850 or 800-457-3562



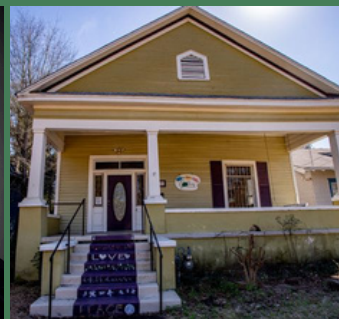
City of Selma  
222 Broad Street • Selma, AL 36701



**Sarah Blackmon**  
Vaughan-Smitherman



**Walter D. Givhan**  
Silent Auction



**Selma Art Guild**  
April McCartney



**Old Cahawba**  
St. Luke's



**Presented by the**  
Selma-Dallas County  
Historic Preservation Society  
**March 20-21, 2026**