



Six distinguished homes. Two centuries of history. One unforgettable weekend.

HISTORIC
SELMA-DALLAS COUNTY
Tour of Homes

For five decades, the Historic Selma-Dallas County Tour of Homes has opened doors to the stories, craftsmanship, and architectural legacy of our region. The 50th Anniversary Tour, held March 20–21, 2026, is a Golden Anniversary celebration showcasing six exceptional private homes and two iconic museums, each offering a rare glimpse into nearly two centuries of Black Belt history.

This year's tour features six privately owned historic residences open from 10AM-4PM on Saturday. They represent a range of architectural styles from the early 19th century through the antebellum period. Each home has been carefully preserved and tells a unique story of life, land, and legacy in Dallas County.

The **Bland–Chestnut–Turner House** is a classic Plantation “I” House featuring refined Greek Revival details, original interior elements, and an on-site family cemetery currently undergoing restoration.

The **Ellis–Dunaway–Gardner House** began its life as a boys’ academy before becoming a private residence, and has been thoughtfully restored to highlight its original architectural character and educational roots.

The **Mill–Albritton House**, documented by the Historic American Buildings Survey, is an elegant antebellum home distinguished by its octagonal columns, heart pine floors, double staircases, and multiple fireplaces.

The **Molett House** is one of the oldest surviving homes in Dallas County and has remained in the same family for nearly two centuries, carefully preserved and relocated to protect it from demolition and flooding.

The **Pope–Givhan House** is a Tidewater Cottage reflecting the traditional lifestyle of the planter class, recently restored and relocated, with expansive porches, restored fireplaces, and sweeping Black Belt views.

Tasso is a Federal-style home celebrated for its rare French panoramic scenic wallpaper and extensive preservation efforts that honor both its artistry and architectural integrity.

In addition to the private homes, tour guests are invited to explore two of Selma’s most treasured historic landmarks. **Sturdivant Hall Museum** (F:10–4, S:10–2) showcases the grandeur of Greek Revival architecture with its iconic columns, imported Italian marble, and timeless elegance, while the **Vaughan–Smitherman Museum** (F:10–4, S:10–12) stands as a cornerstone of Selma history built as a school for orphans and children of Masons, it has served as a Confederate hospital, the Dallas County Courthouse, a military school, and the Vaughan Memorial Hospital through the years.



Bland–Chestnut–Turner
(c. 1842)



Ellis–Dunaway–Gardner
(c. 1850)



Mill–Albritton
(c. 1854)



Molett House
(c. 1825)



Pope–Givhan
(c. 1838)



Tasso
(c. 1830s)



Sturdivant Hall
(c. 1856)



Vaughan–Smitherman
(c. 1847)



The weekend includes a festive Friday evening Gala beginning at 6PM at the **Vaughan-Smitherman Museum**, featuring refreshments, live music by **Sarah Blackmon**, a silent auction, and a keynote address by **Major General Walter D. Givhan, USAF (Ret.)**, a Selma native with a distinguished military and civic career.

SDCHPS is partnering with **Old Cahawba Archaeological Park** to offer guided tours, beginning on the hour, of the one-room schoolhouse, St. Luke's Episcopal Church, and the Kirkpatrick property from 10 AM-4 PM both days.

Art lovers will enjoy a special exhibit at the **Selma Art Guild** featuring baskets by **April McCartney** and artwork by local artists from 10 AM-4 PM both days.

The **Golden Anniversary Tour of Homes** is a celebration of preservation, community, and history!

Package Tickets are \$50 for adults and \$25 for children. They are available at **Eventbrite.com** and may also be purchased **in person** on **March 20-21** at the **Vaughan-Smitherman Museum** (F:9-4 & 6-7) & (S:10-12) as well as at the **Orrville Library** (S:9-12).

For updates, lodging, dining and tourism info, please follow **HistoricSelma** on **Facebook** and **Instagram** or call 334-412-8550 or 800-457-3562.

Sponsored by:

Sweet Home Alabama
www.Alabama.Travel



Selma-Dallas County Historic Preservation Society
HistoricSelma.org
334-412-8850 or 800-457-3562



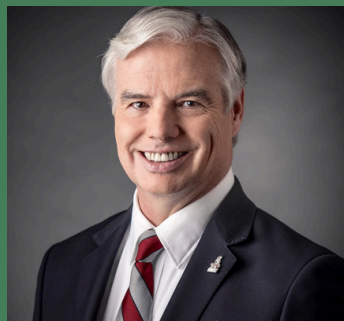
City of Selma
222 Broad Street • Selma, AL 36701



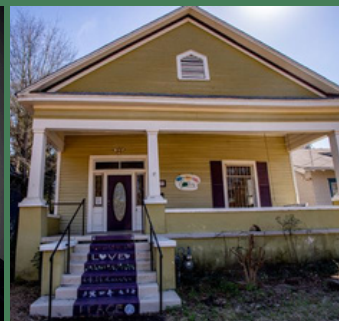
Presented by the
Selma-Dallas County
Historic Preservation Society
March 20-21, 2026



Sarah Blackmon
Gala on Friday



Walter D. Givhan
Silent Auction



Selma Art Guild
April McCartney



Old Cahawba
St. Luke's

